

# the expolinc frame

HIGH PERFORMANCE  
DISPLAY SYSTEMS





# Passion behind every detail

Since 1986, we have designed and crafted high performance display systems with passion behind every detail. Every part is designed in Sweden by our dedicated engineers focusing on simplicity, high tolerance, durability and appearance.

We are committed to deliver superior products made by materials such as specified aluminium with high surface finish, cold formed steel and high quality thermoplastics.

## LET US INTRODUCE...

The Expolinc and Light Frame system. It requires no tools or specialized labor to setup. The unique magnetic connectors guide you to a smooth, stable and safe installation and the optimized packaging minimizes shipping, drayage and storage costs.

The systems design consists of smooth, rounded edges along with profiles with high surface finish for a stylish environment.

Explore the flexible and revolutionary world of The Expolinc and Light Frame system - Whether you need a simple backwall or an advanced environment.

## The Expolinc frame, light frame and counter



# Portable and toolless

SPECIFIED ALUMINIUM  
WITH HIGH SURFACE FINISH



Magnetic clutch.  
Assembling made simple.



STRAIGHT  
AND SIMPLE

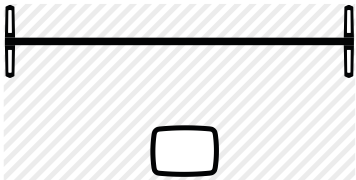


CONNECT FOR  
MORE

# the expolinc frame



LAYOUT

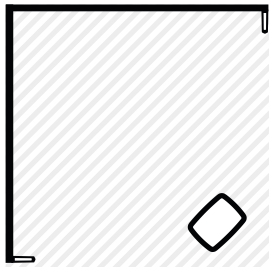


1 pc Expolinc Frame 2,95 m (height 2,5 m), 1 pair double sided stabilizing feet, 1 pc Standard Case XL



3 000 X 1 500 mm  
4,5 m<sup>2</sup>

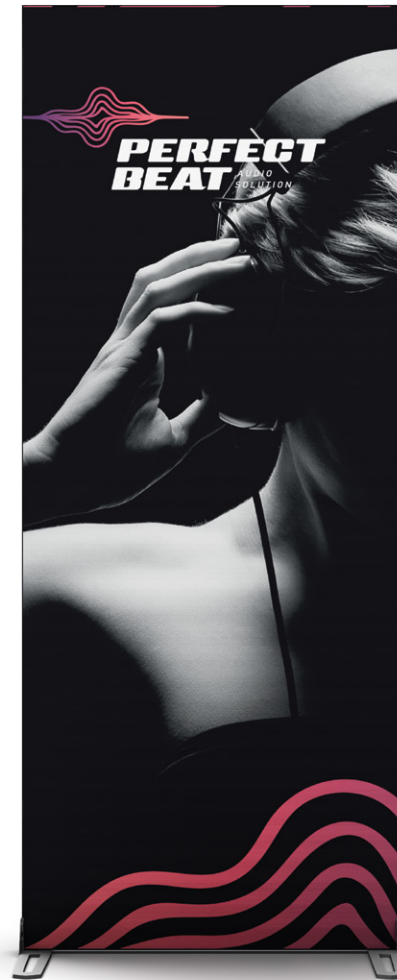
LAYOUT



2 pcs Expolinc Frame 2,95 m (height 2,5 m), 1 pair single sided stabilizing feet,



3 000 X 3 000 mm  
9 m<sup>2</sup>



**1**  
METER



**2**  
METER



**4**  
METER



**PERFECT BEAT**  
AUDIO SOLUTION

Frames to combine or stand alone

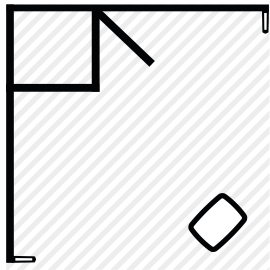
Up to 5 meter, seamless



COUPLED WITH  
STORAGE



LAYOUT



1 pc Storage room 0,95 x 1 m (height 2,5 m), 2 pcs Expolinc Frame 1,95 m (height 2,5 m), 1 pair single sided stabilizing feet, 1 pc Standard Case XL



3 000 X 3 000 mm  
9 m<sup>2</sup>

THE EXPOLINC FRAME  
EXPOLINC.COM

the expolinc  
light frame

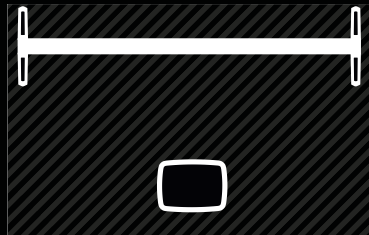
SIMPLE BUT  
EYE-CATCHING



WHEN NEED TO  
BE SEEN



LAYOUT

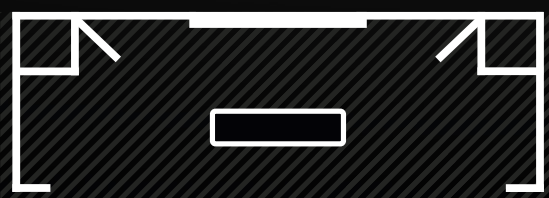


1 pc Expolinc Light Frame 2,8 m (height 2,5 m), 1 pair double sided stabilizing feet, 1 pc Standard Case XL



2 000 X 3 000 mm  
6 m<sup>2</sup>

LAYOUT



2 pcs Storage room 0,95 x 1 m (height 2,5 m), 4 pcs Expolinc Frame 1,95 m (height 2,5 m), 2 pcs Expolinc Frame 0,5 m (height 2,5 m), 1 pc Expolinc Light Frame 2,8 m (height 2,5 m), 1 pc Expolinc Frame Counter 2 m, 1 pair single sided stabilizing feet



9 000 X 3 000 mm  
27 m<sup>2</sup>



the choice is yours  
BUILD WHATEVER



We create marketing  
tools for professionals

HIGH PERFORMANCE  
DISPLAY SYSTEMS

[EXPOLINC.COM](http://EXPOLINC.COM)

